

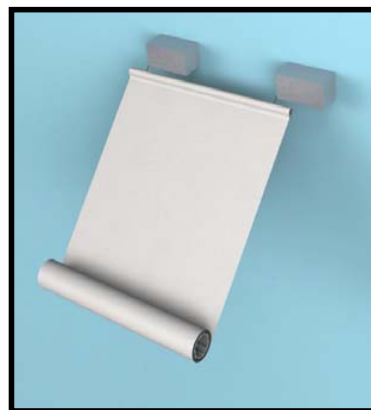
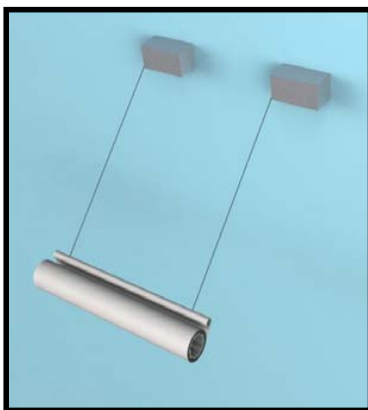
Uplift



Triangular, square and rectangular shaped blinds.

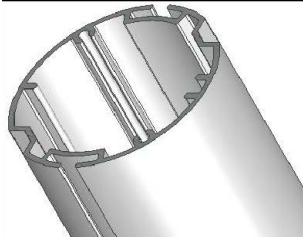
Compact system with few visible details, system keeps fabric taut and can be mounted at any angle to pull straight.

System size and mounting tailored to match project needs.

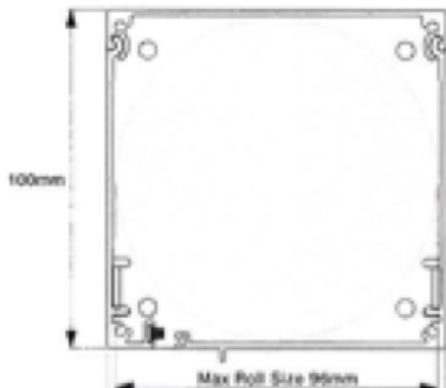


Blind Parts

Tube sizes, 47mm , 58mm , 86mm, appropriate size used for each project.



Box sizes 100mm 120mm 150mm standard colour white.



Tension System 3.2kg tension 4 metre extension, size of box 155mm x 60mm x 60mm 2 boxes required per blind. Boxes can either be mounted inside the above boxes at the top of system, or at the base of the system behind the roller blind, using a pulley.



Brackets standard colour white size 100mm x 80mm wide



Fabric choice must be 0% stretch, the fabric is fabricated with a strengthening bar when required.

Example of Trapezoid system.

