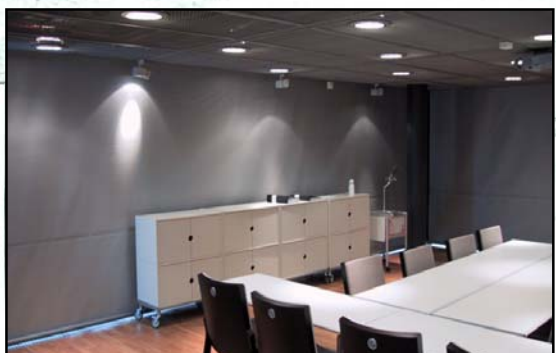


WideGlide 100 open



WideGlide 100 closed



WideGlide 200 open



WideGlide 200 closed

Erco WideGlide 100 & 200

WideGlide 100

A system where the fabric is fixed at the top. The tube and motor moves along a side channel which extends the fabric. This system is for installation vertically or on surfaces with a minimum inclination of 20° from horizontal. The system is suited for blackout and continuous solar control blinds.

WideGlide 200

Similar to a WideGlide100 with the fabric rolling off the front roll fabric weighed by a continuous pocket base bar. Suits vertical applications only, 90° link available. The whole system is driven by just one motor.

Construction

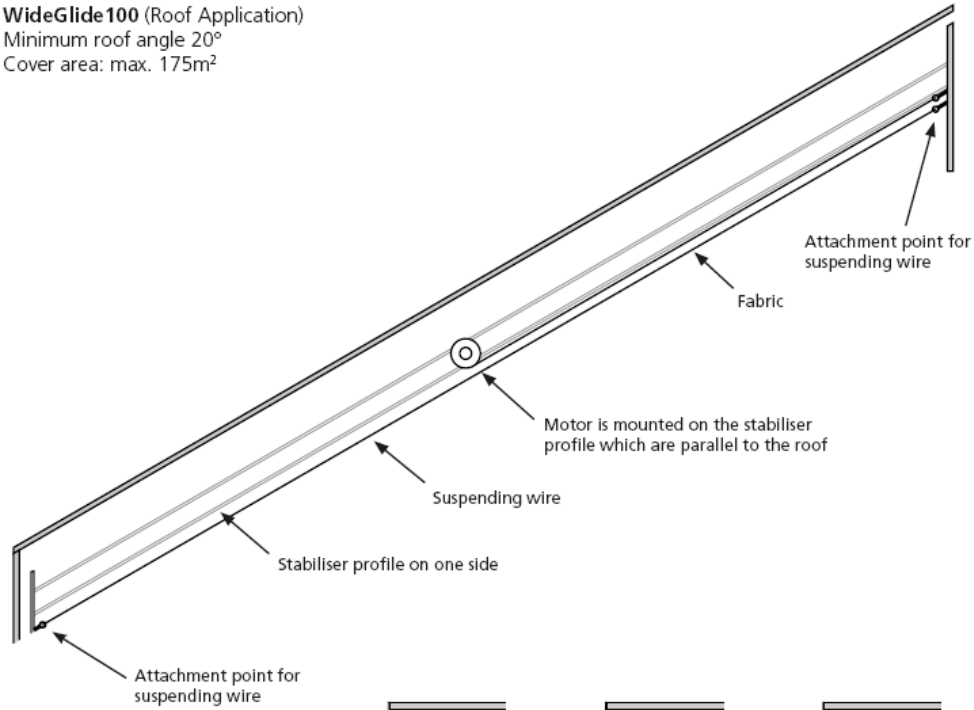
The roller tube, fabric support profile, and side channel profile are made of anodised aluminium.

The joints free running plate profiles are stainless or galvanized steel.

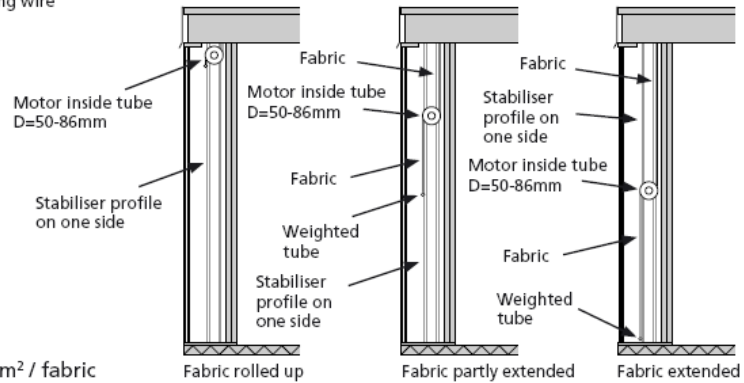
Fabrics

A wide choice of technical fabrics for internal and external applications in screens and blockouts.

WideGlide 100 (Roof Application)
 Minimum roof angle 20°
 Cover area: max. 175m²



WideGlide 200
 Cover area: max. 300m² / fabric



Dimensions	Max. width: (mm)	Max. drop: (mm)
WideGlide 100	40 000*	2800
WideGlide 200	40 000*	5800